

| Limited Palette | | | | |
|------------------|--------------------|------------------------------------|---|--|
| Paint Name | Pigment Index Name | Gamblin | Michael Harding | Rublev |
| Titanium White | PW6 | Titanium White | Titanium White No 2 (also contains PW4) | Titanium White |
| Cadmium Yellow | PY35 | Cadmium Lemon | Cadmium Yellow Lemon | Cadmium Yellow Light |
| Cadmium Red | PR108 | Cadmium Red Medium | Cadmium Red | Cadmium Red Light |
| Ultramarine Blue | PB29 | Ultramarine Blue | Ultramarine Blue | Ultramarine Blue (Red Shade) |
| Burnt Umber | PBr7 | Burnt Umber | Burnt Umber (PBr6) | French Burnt Umber |

| Bonus Colors | | | | |
|----------------------|--------------------|--------------------------------------|------------------------------------|--------|
| Paint Name | Pigment Index Name | Gamblin | Michael Harding | Rublev |
| Cobalt Teal | PB28 or PG50 | Cobalt Teal (PB28) | Cobalt Teal (PG50) | n/a |
| Quinacridone Magenta | PR122 | Quinacridone Magenta | Magenta | n/a |

Gamblin, Michael Harding, and Rublev paints all use linseed oil as their binder. Gamblin paints are the most affordable while Rublev are the most expensive. In my opinion, Rublev paints tend to be the most pigmented (rich in color) while Michael Harding's are the most buttery (easy to spread and work with).

Mixing the colors listed above creates a wide range of hues (i.e. Burnt Umber + Ultramarine Blue = Black, Cadmium Lemon + Cadmium Red Medium = Orange). This document alone contains over 350 unique color blends using Gamblin's limited palette. To learn more about color and to see other examples of color palettes, I highly recommend reading [The Oil Painter's Color Handbook](#) by Todd M. Casey.

Please note that some of the links listed above are affiliate links; if you make a purchase through one of them I may earn a small commission. There is no additional cost to you and your purchase supports the creation of more demos and videos.

Looking for other art studio essentials? Check out my favorite supplies here: <https://www.nikitacoulombe.com/artsupplies>

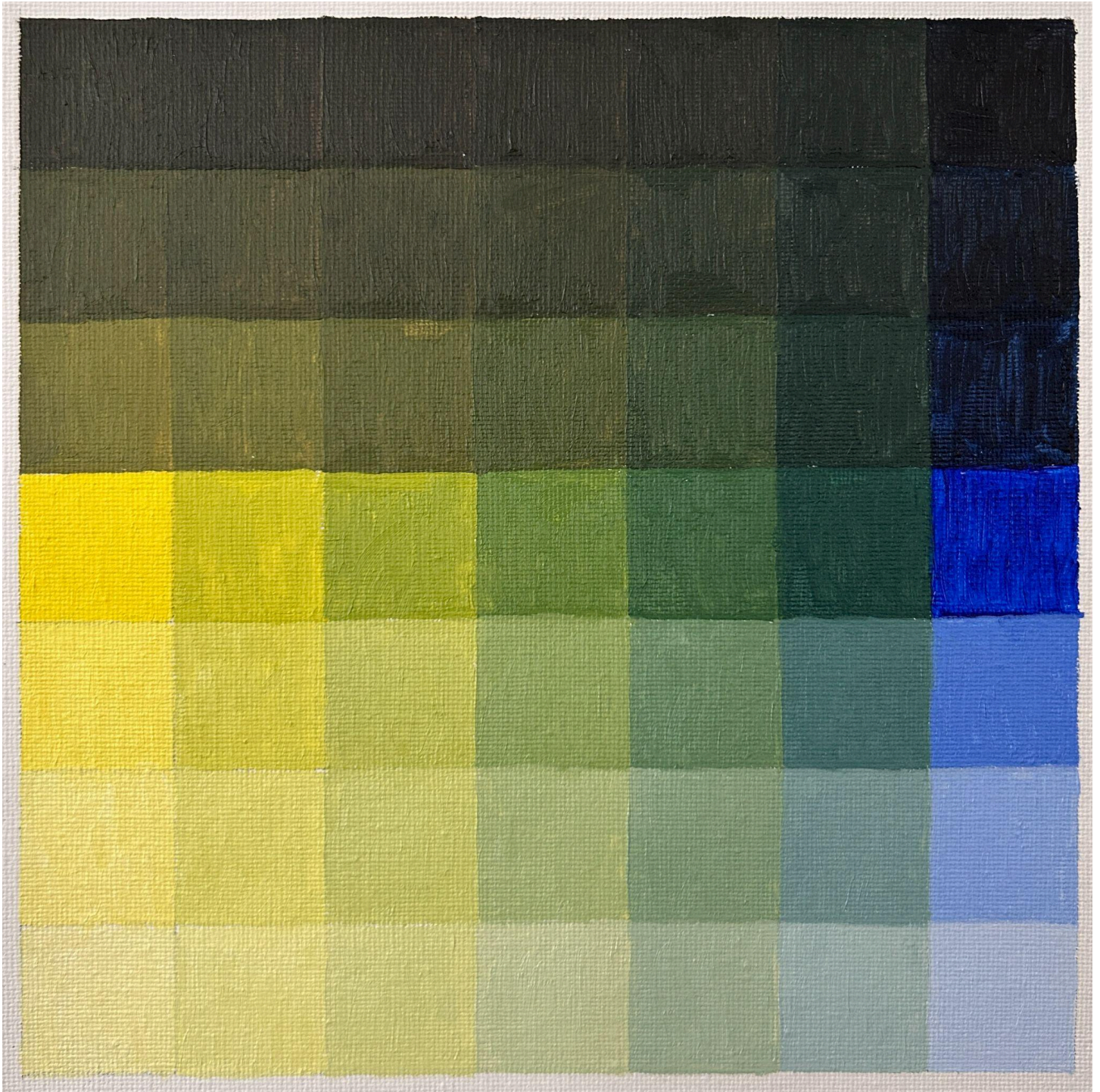
Color Wheel and Gray Scale



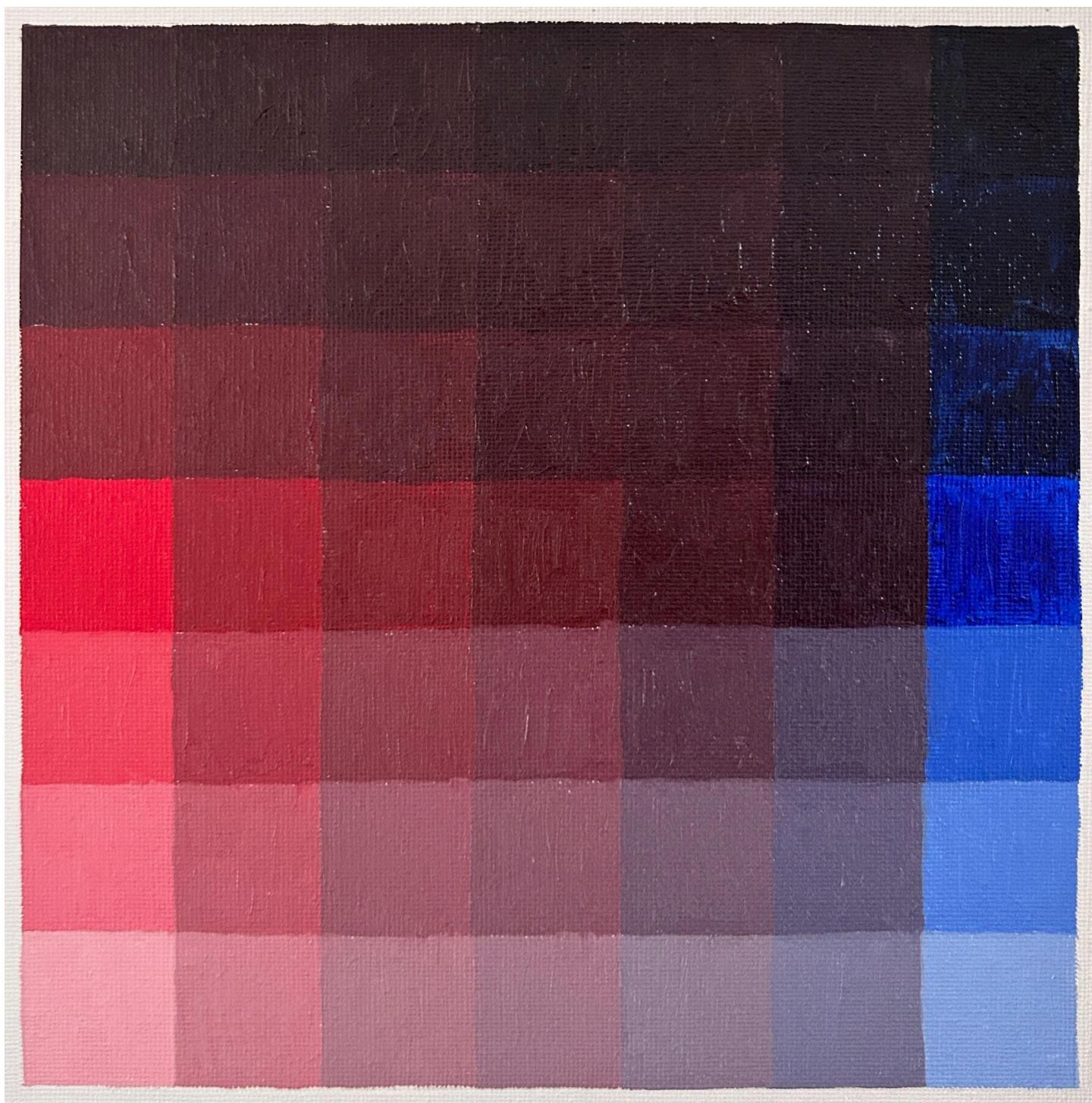
Cadmium Lemon x Cadmium Red Medium = Orange



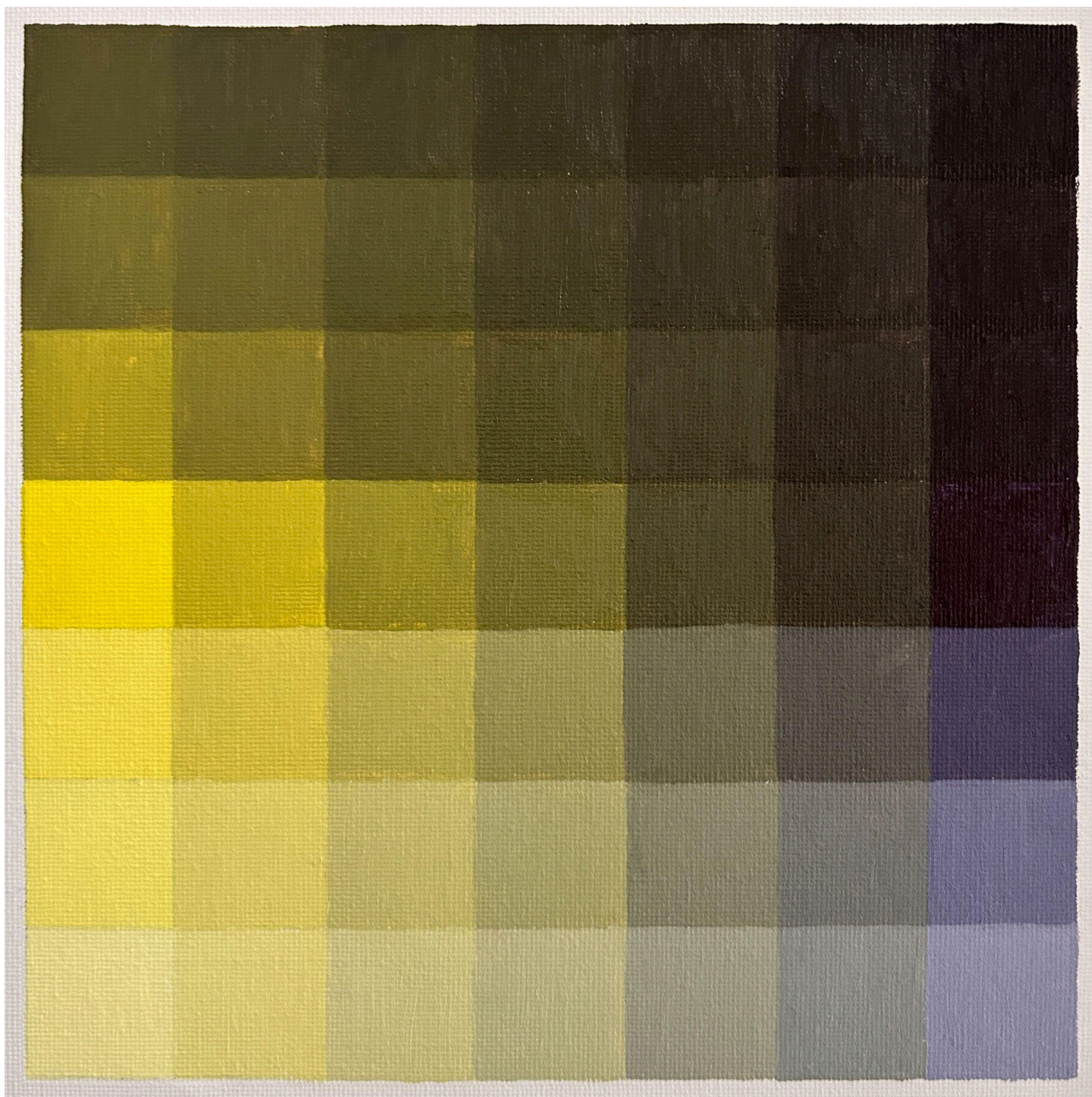
Cadmium Lemon x Ultramarine Blue = Green



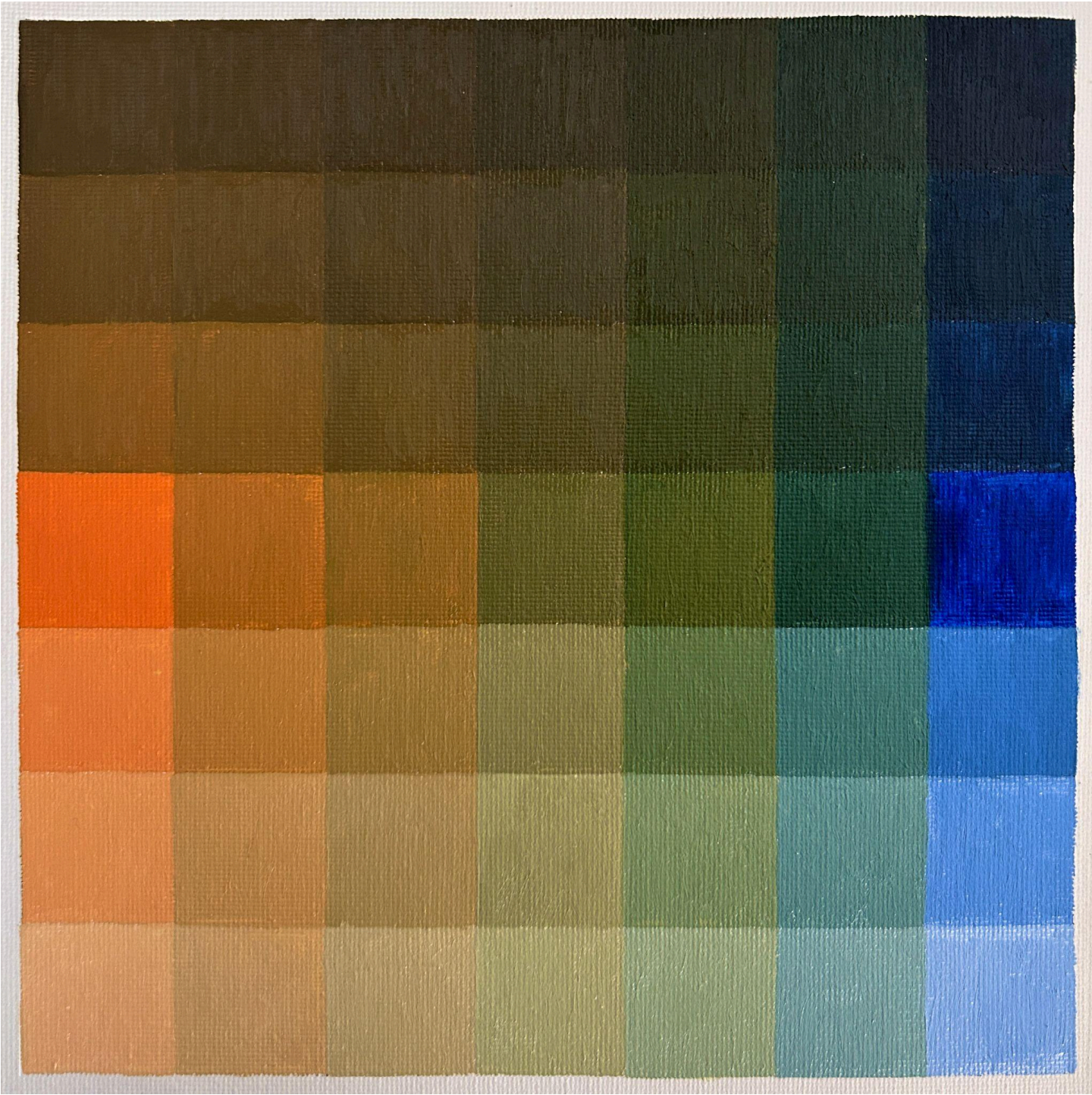
Cadmium Red Medium x Ultramarine Blue = Purple



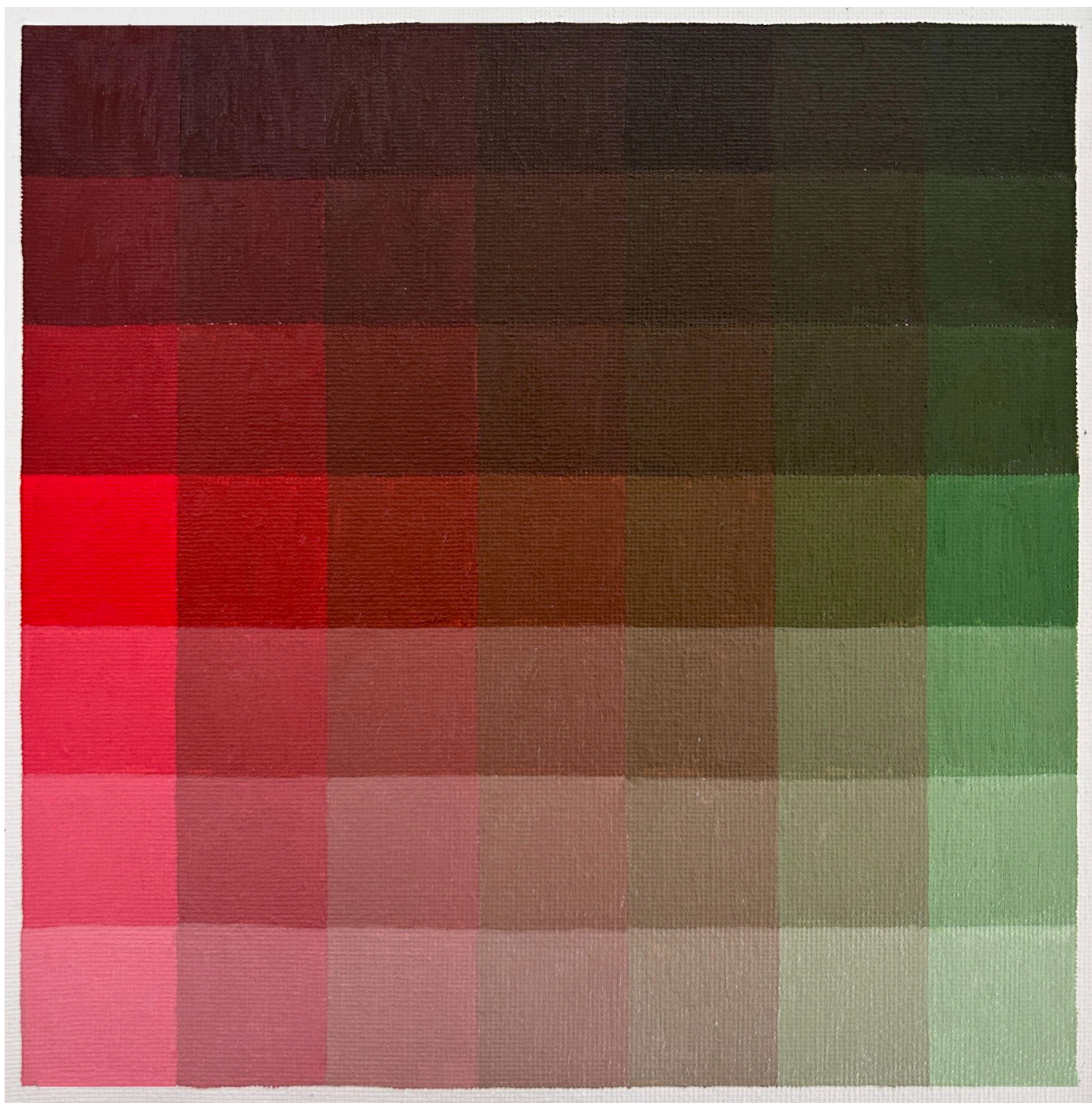
Cadmium Lemon x Purple



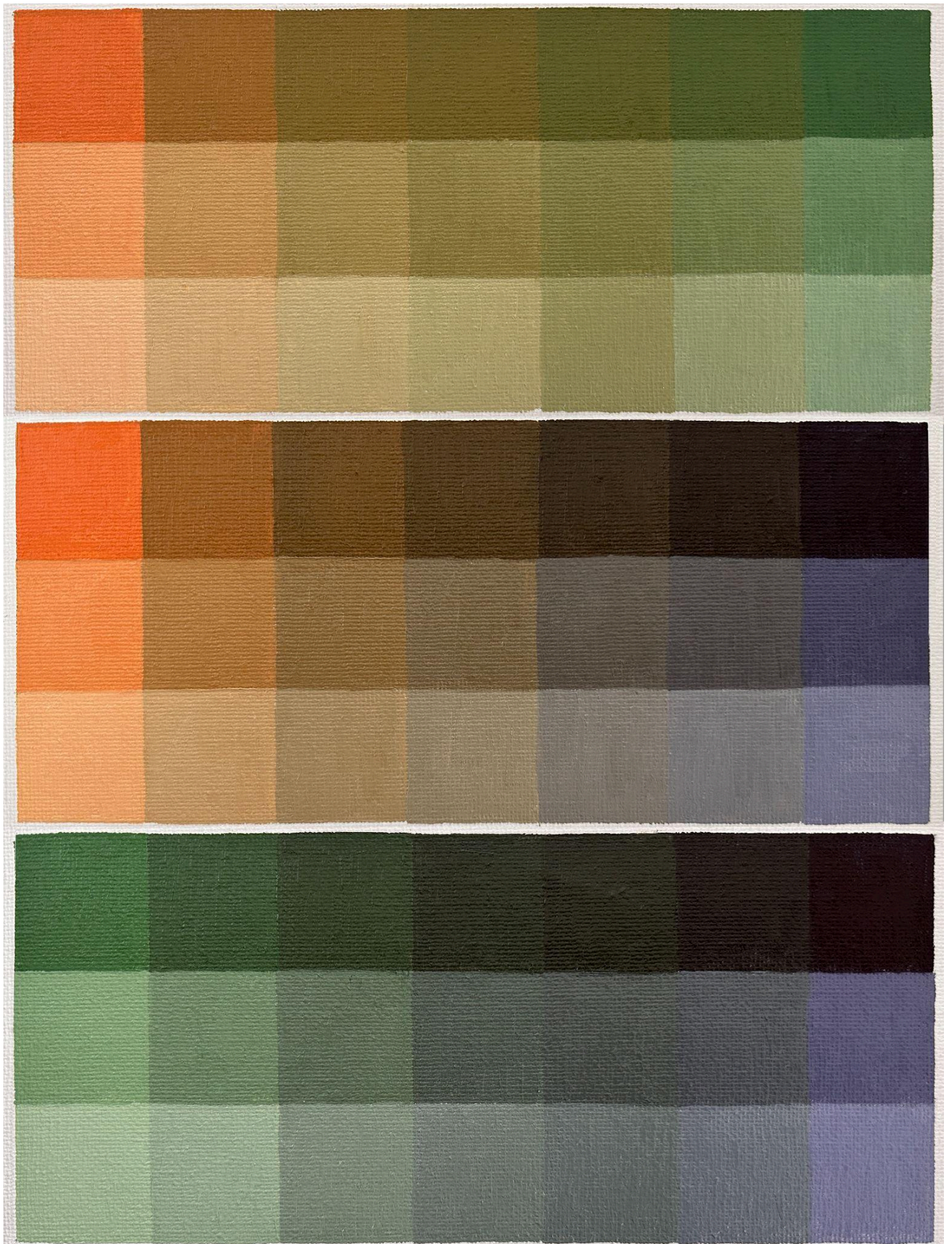
Orange x Ultramarine Blue



Cadmium Red Medium x Green



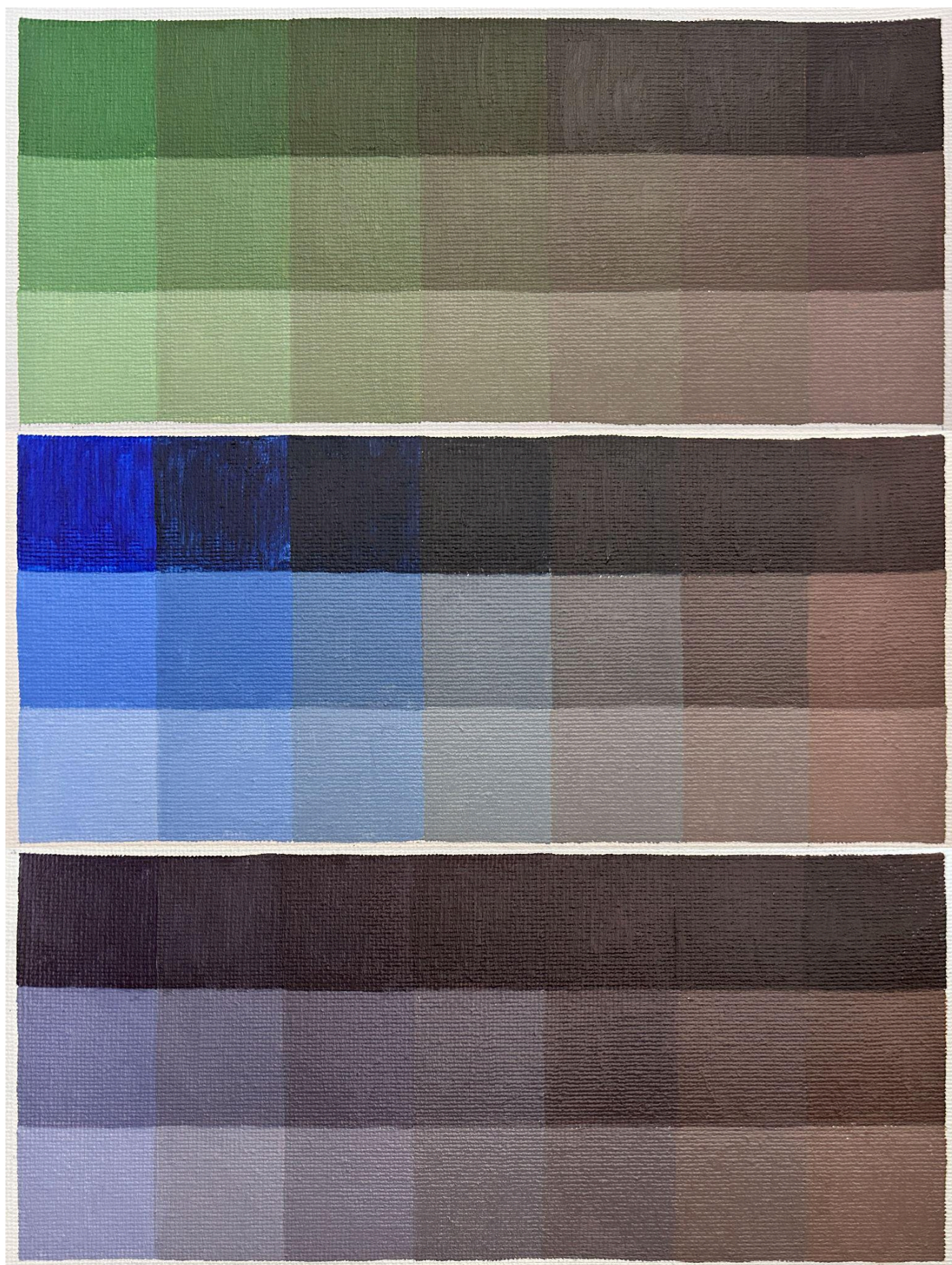
Secondary Blends (Orange x Purple, Orange x Green, Green x Purple)



Burnt Umber Blends - Warm Colors



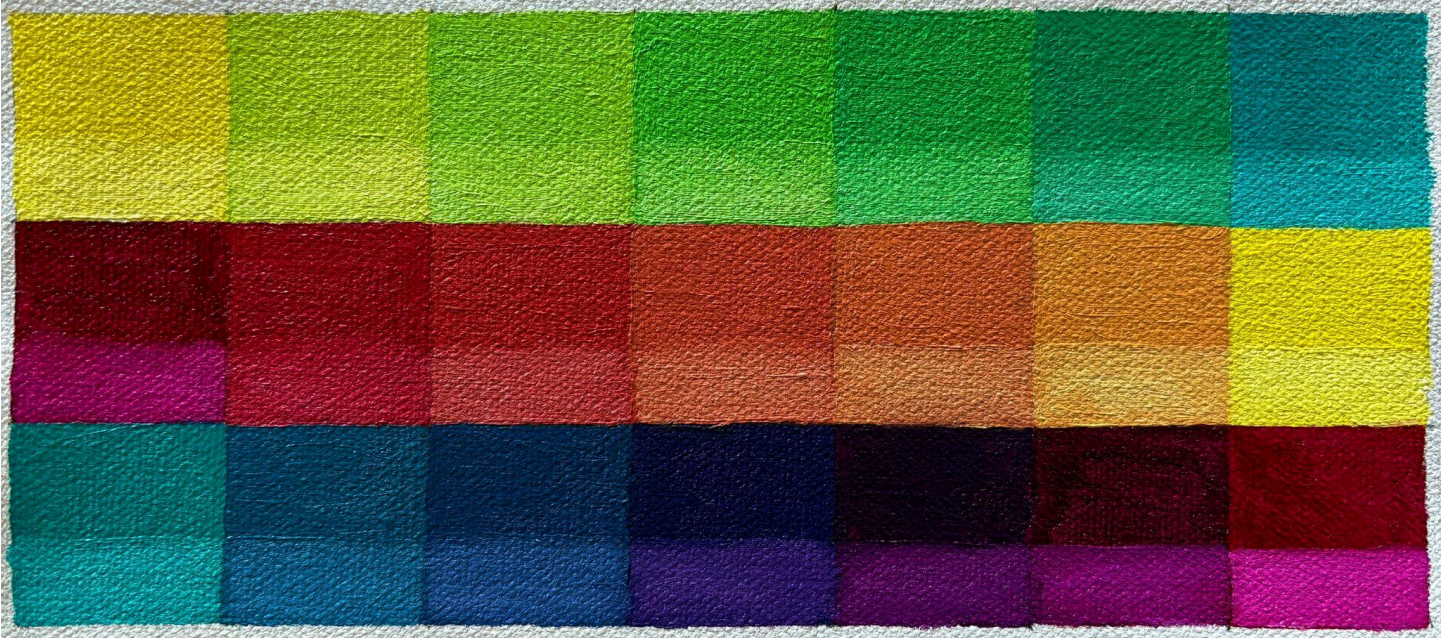
Burnt Umber Blends - Cool Colors



Purples x Cadmium Lemon
Magenta x Ultramarine Blue (left)
Cadmium Red Medium x Ultramarine Blue (right)



Cobalt Teal x Magenta x Cadmium Lemon



Cobalt Teal x Burnt Umber

