

Limited Palette				
Paint Name	Pigment Index Name	Gamblin	Michael Harding	Rublev
Titanium White	PW6	Titanium White	Titanium White No 2 (also contains PW4)	Titanium White
Cadmium Yellow	PY35	Cadmium Lemon	Cadmium Yellow Lemon	Cadmium Yellow Light
Cadmium Red	PR108	Cadmium Red Medium	Cadmium Red	Cadmium Red Light
Ultramarine Blue	PB29	Ultramarine Blue	Ultramarine Blue	Ultramarine Blue (Red Shade)
Burnt Umber	PBr7	Burnt Umber	Burnt Umber (PBr6)	French Burnt Umber

Bonus Colors				
Paint Name	Pigment Index Name	Gamblin	Michael Harding	Rublev
Cobalt Teal	PB28 or PG50	Cobalt Teal (PB28)	Cobalt Teal (PG50)	n/a
Quinacridone Magenta	PR122	Quinacridone Magenta	Magenta	n/a

Gamblin, Michael Harding, and Rublev paints all use linseed oil as their binder. Gamblin paints are the most affordable while Rublev are the most expensive. In my opinion, Rublev paints tend to be the most pigmented (rich in color) while Michael Harding's are the most buttery (easy to spread and work with).

Mixing the colors listed above creates a wide range of hues (i.e. Burnt Umber + Ultramarine Blue = Black, Cadmium Lemon + Cadmium Red Medium = Orange). This document alone contains over 350 unique color blends using Gamblin's limited palette. To learn more about color and to see other examples of color palettes, I highly recommend reading [The Oil Painter's Color Handbook](#) by Todd M. Casey.

Please note that some of the links listed above are affiliate links; if you make a purchase through one of them I may earn a small commission. There is no additional cost to you and your purchase supports the creation of more demos and videos.

Looking for other art studio essentials? Check out my favorite supplies here: <https://www.nikitacoulombe.com/artsupplies>

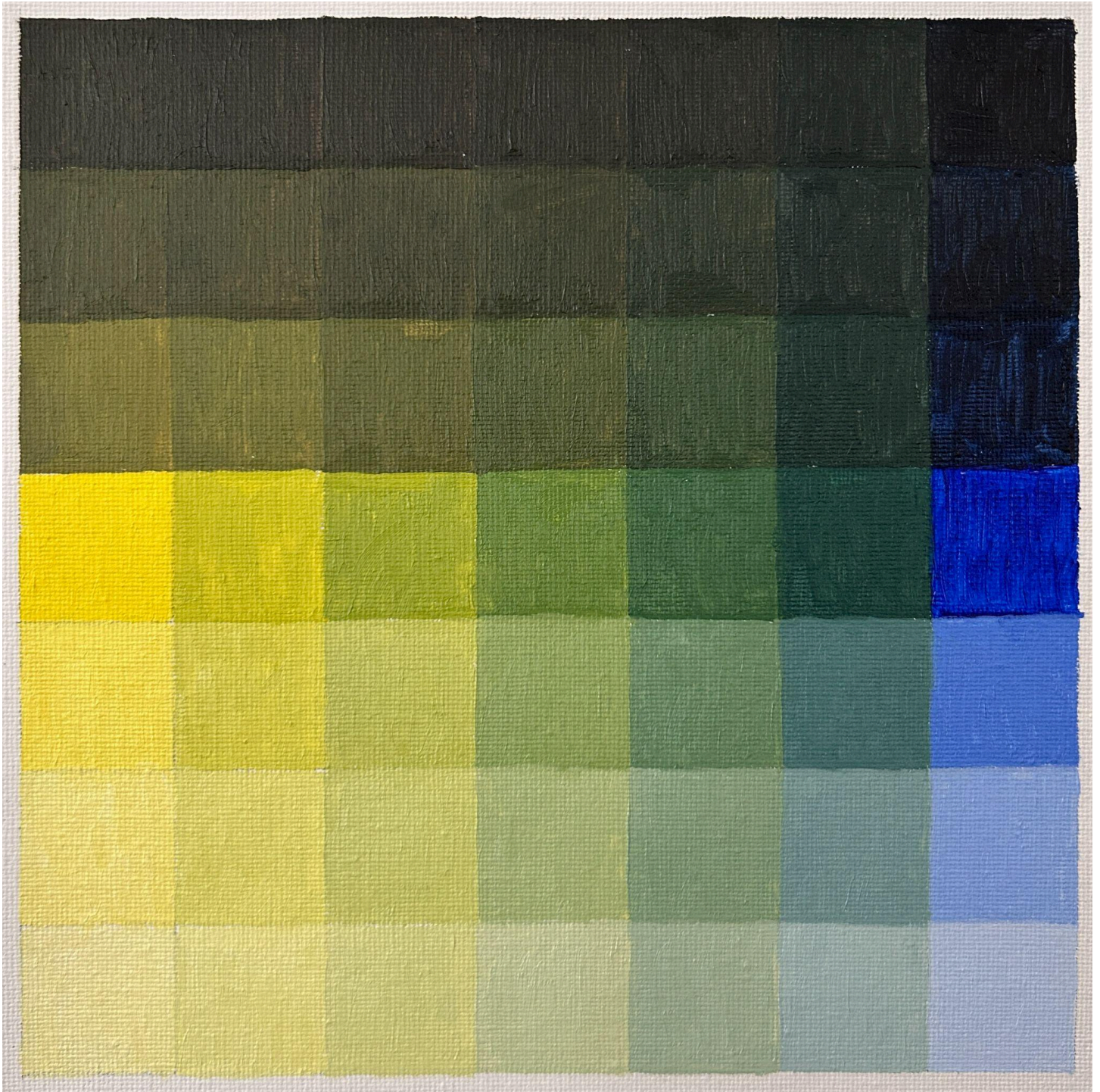
Color Wheel and Gray Scale



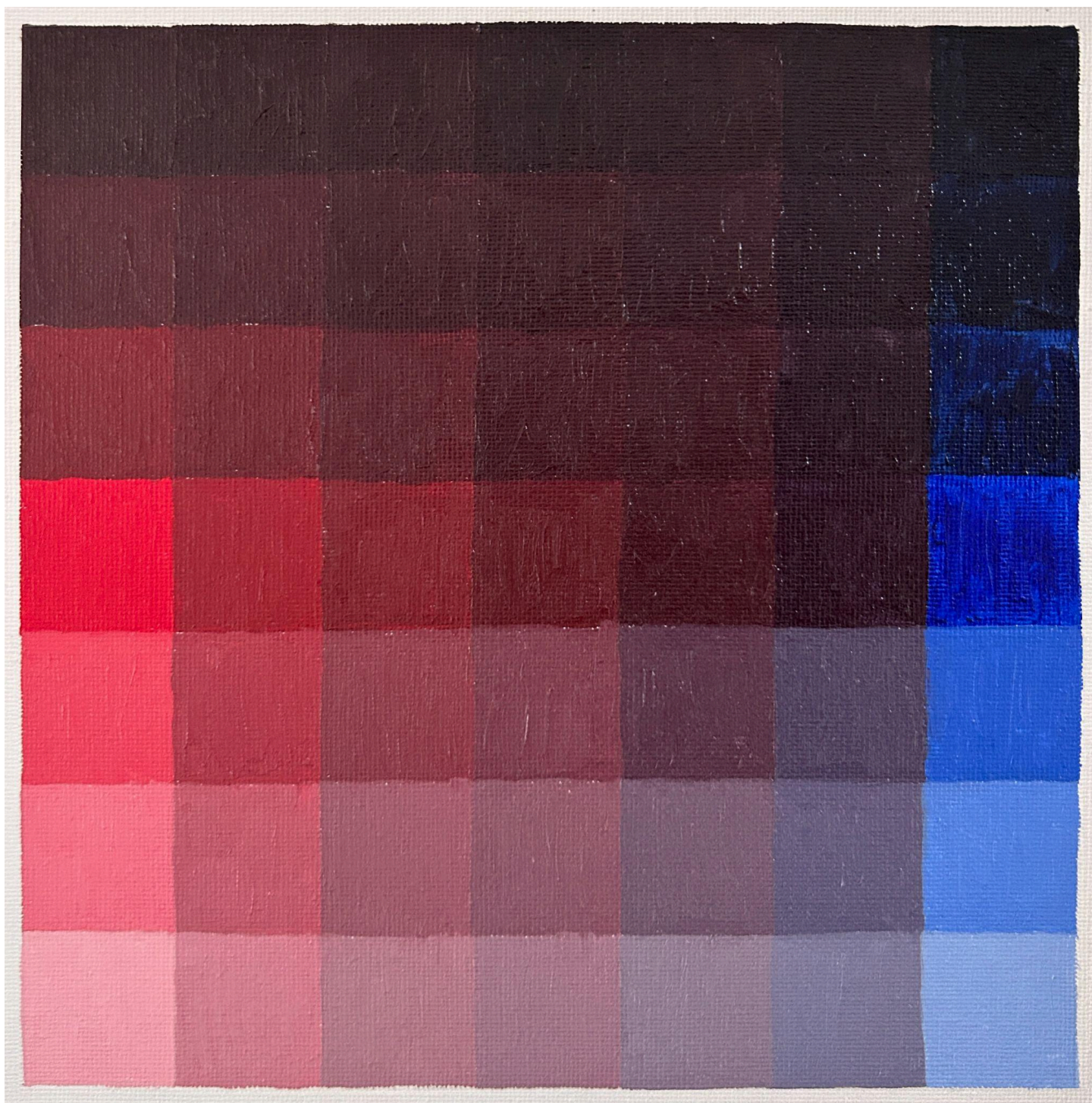
Cadmium Lemon x Cadmium Red Medium = Orange



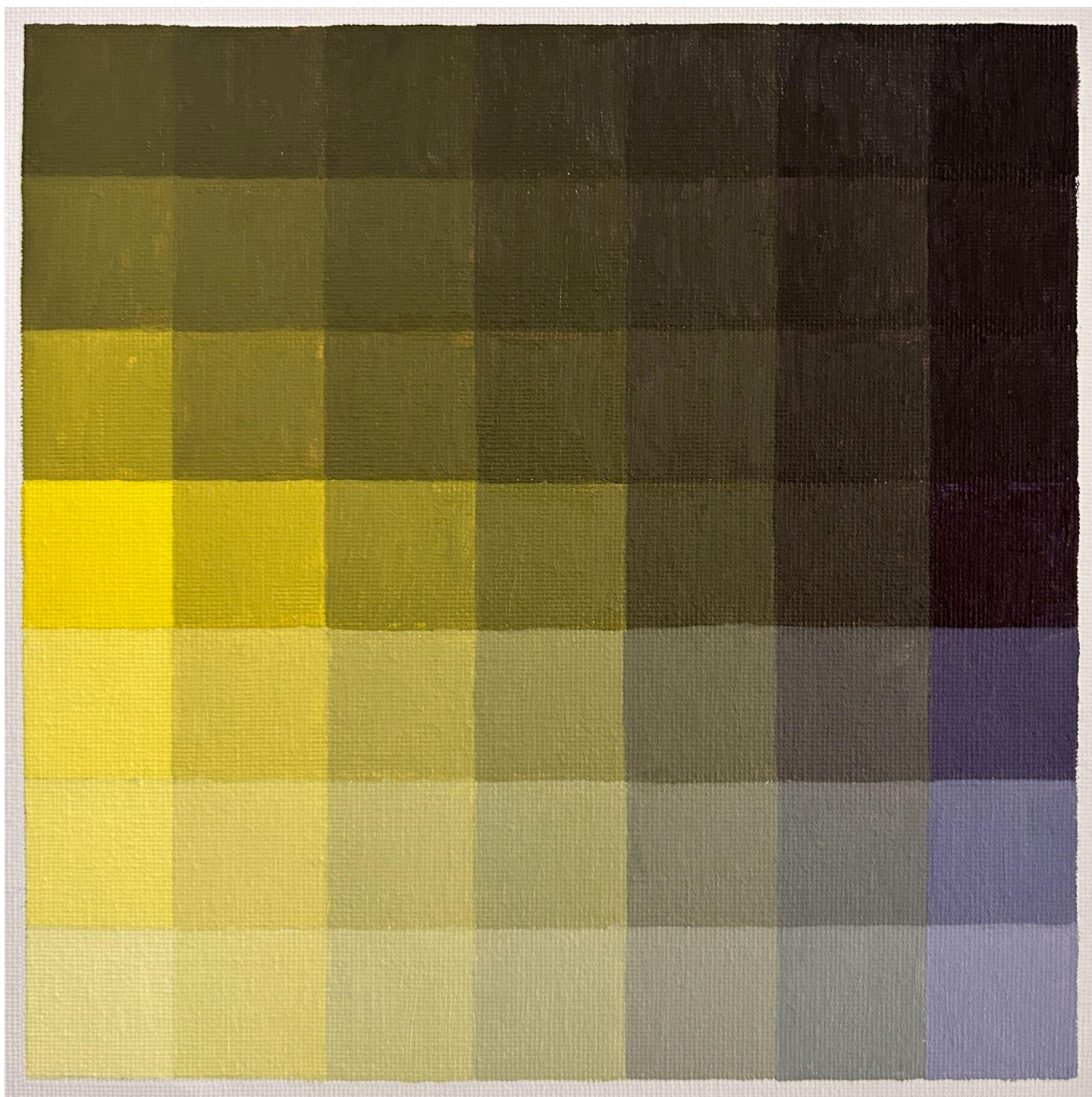
Cadmium Lemon x Ultramarine Blue = Green



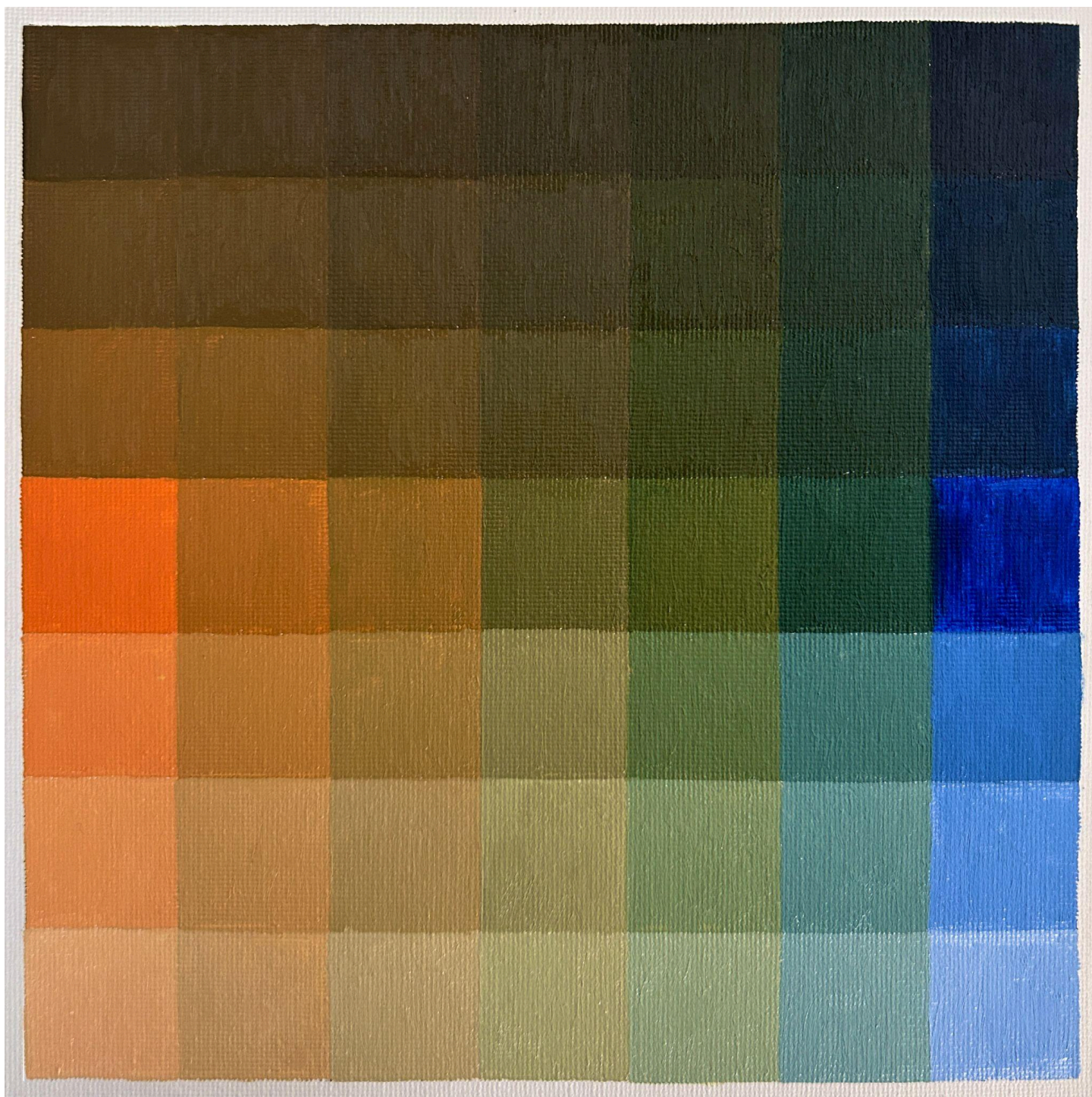
Cadmium Red Medium x Ultramarine Blue = Purple



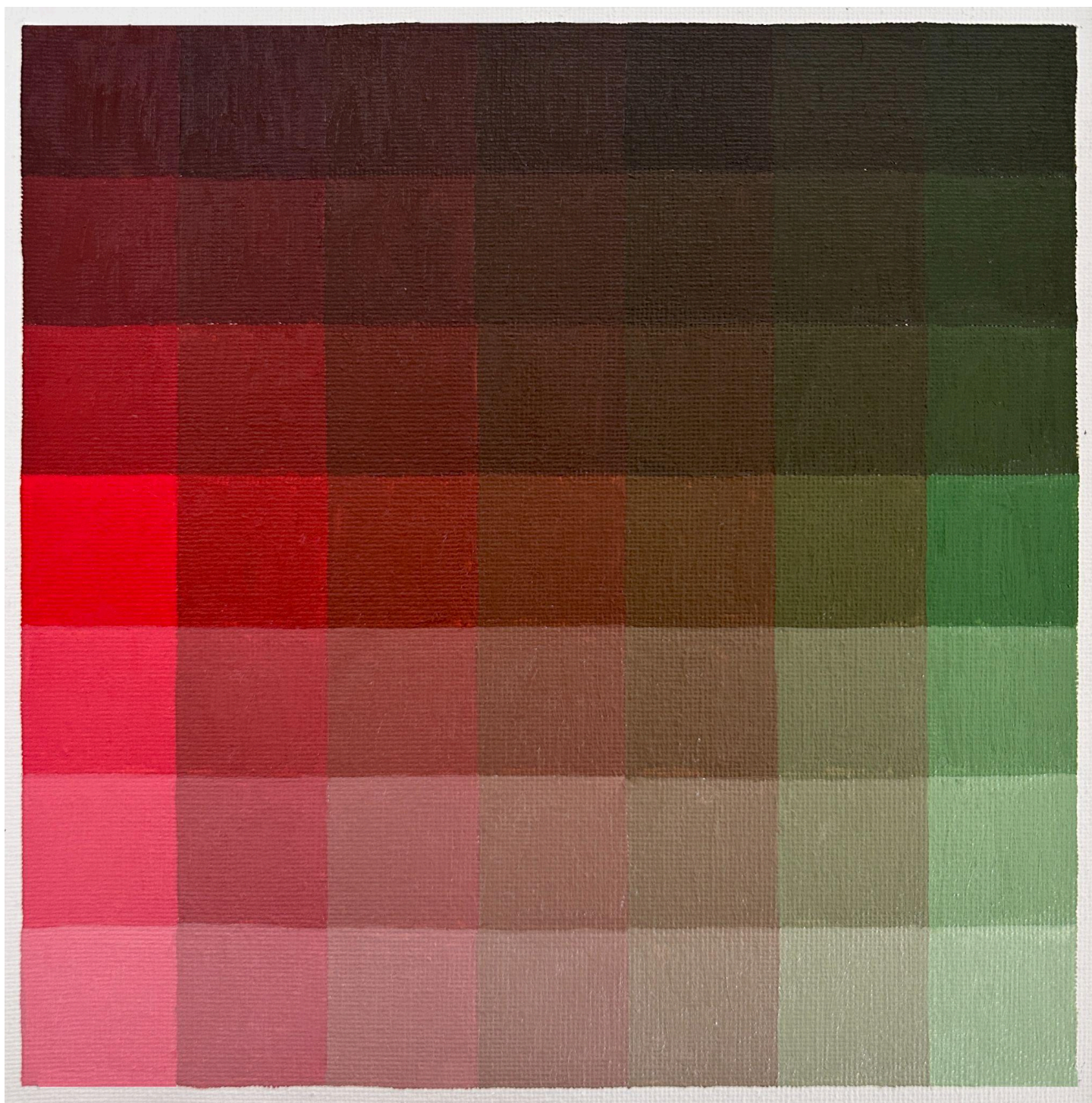
Cadmium Lemon x Purple



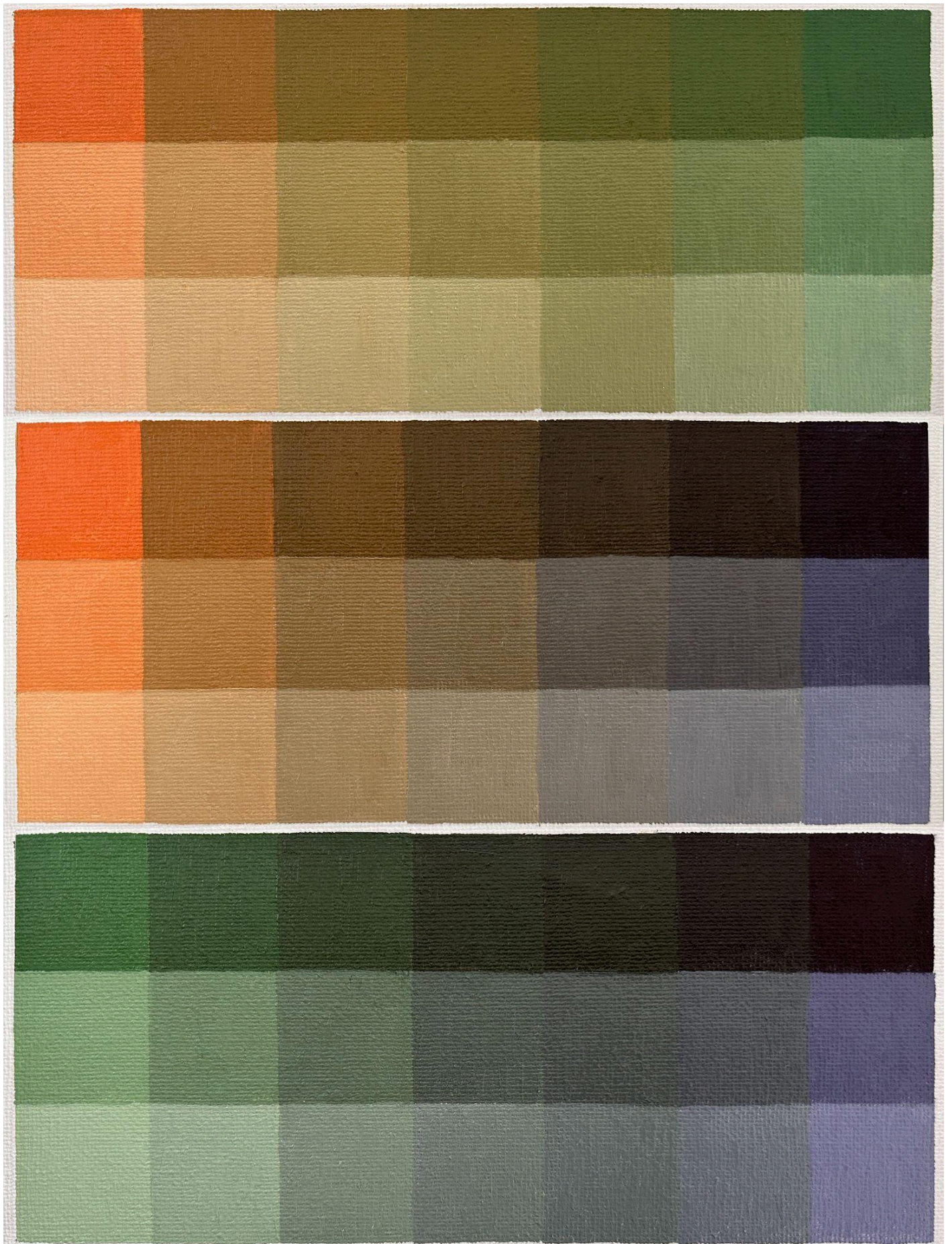
Orange x Ultramarine Blue



Cadmium Red Medium x Green



Secondary Blends (Orange x Purple, Orange x Green, Green x Purple)



Burnt Umber Blends - Warm Colors



Burnt Umber Blends - Cool Colors

